



International Forestry Students' Association



International
**FORESTRY
STUDENTS'**
ASSOCIATION



TOWARDS A
**GLOBAL ACTION PLAN FOR FORESTRY
EDUCATION
(GAPFE)**



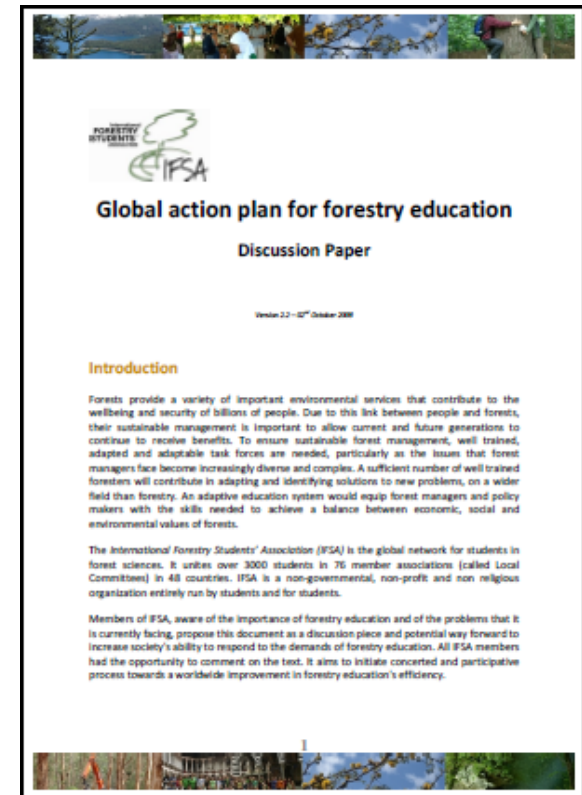
Improve forestry education worldwide

Actively start the process



Structure

- Main problems
- Goals and means
- Scheme
- Way ahead





Problems

- societal recognition
- education institutions
- financial means
- adaptation to changing requirements



Goal 1

- ***Allow a better recognition of the importance of forests and their management***
 - financial and political tools
 - communication
 - education on forests and trees



Goal 2

- ***Provide financial means to sufficient, sustainable, long-term and strategically oriented education***
 - Participation of the private sector
 - Global Fund for Forestry Education?
 - International exchange of professors

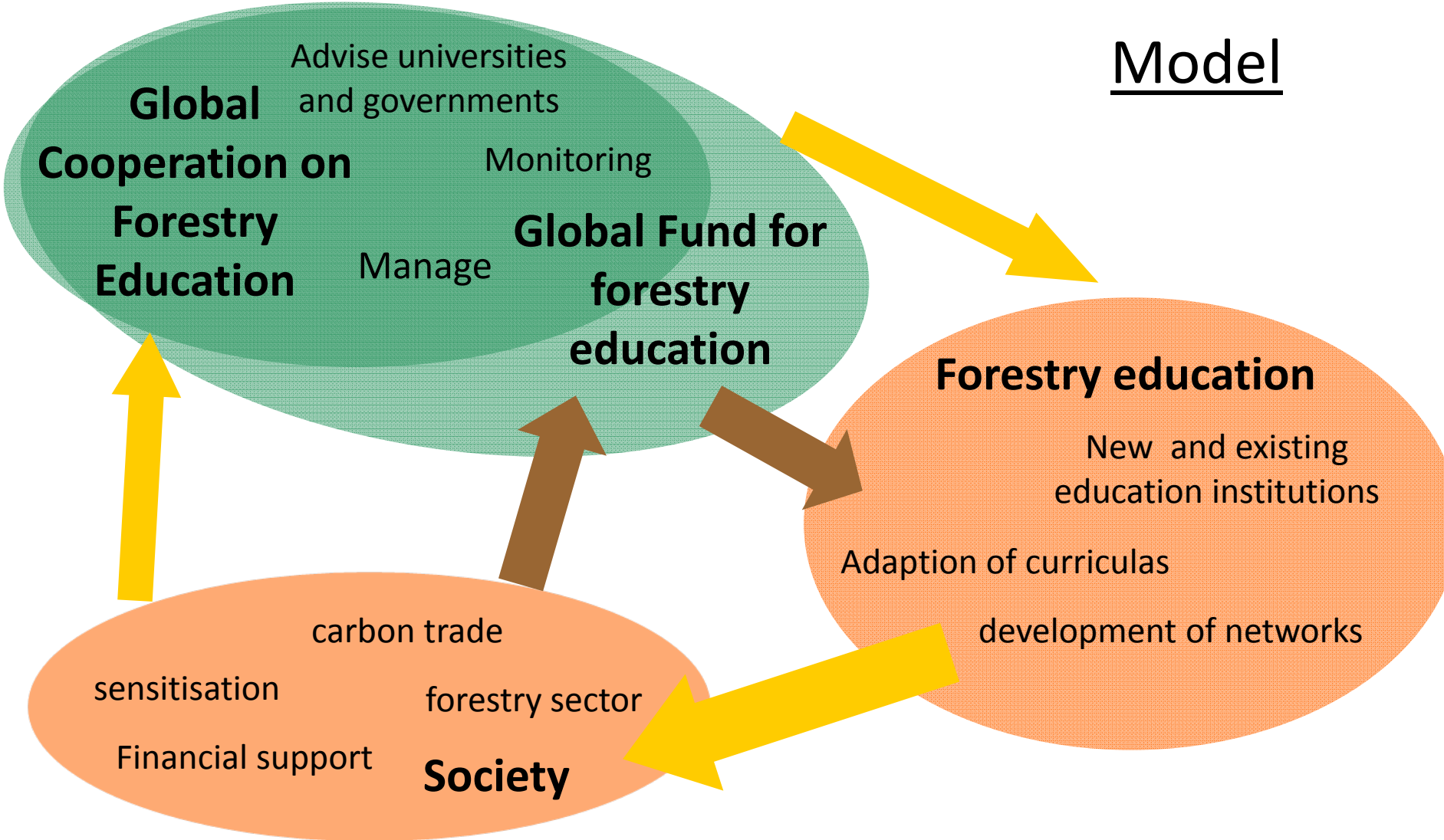


Goal 3

- ***Initiate and accompany the necessary adaptation of education curricula and methods***
 - Link education and research institutions
 - Cross-institutional programmes
 - Global cooperation on forestry education?



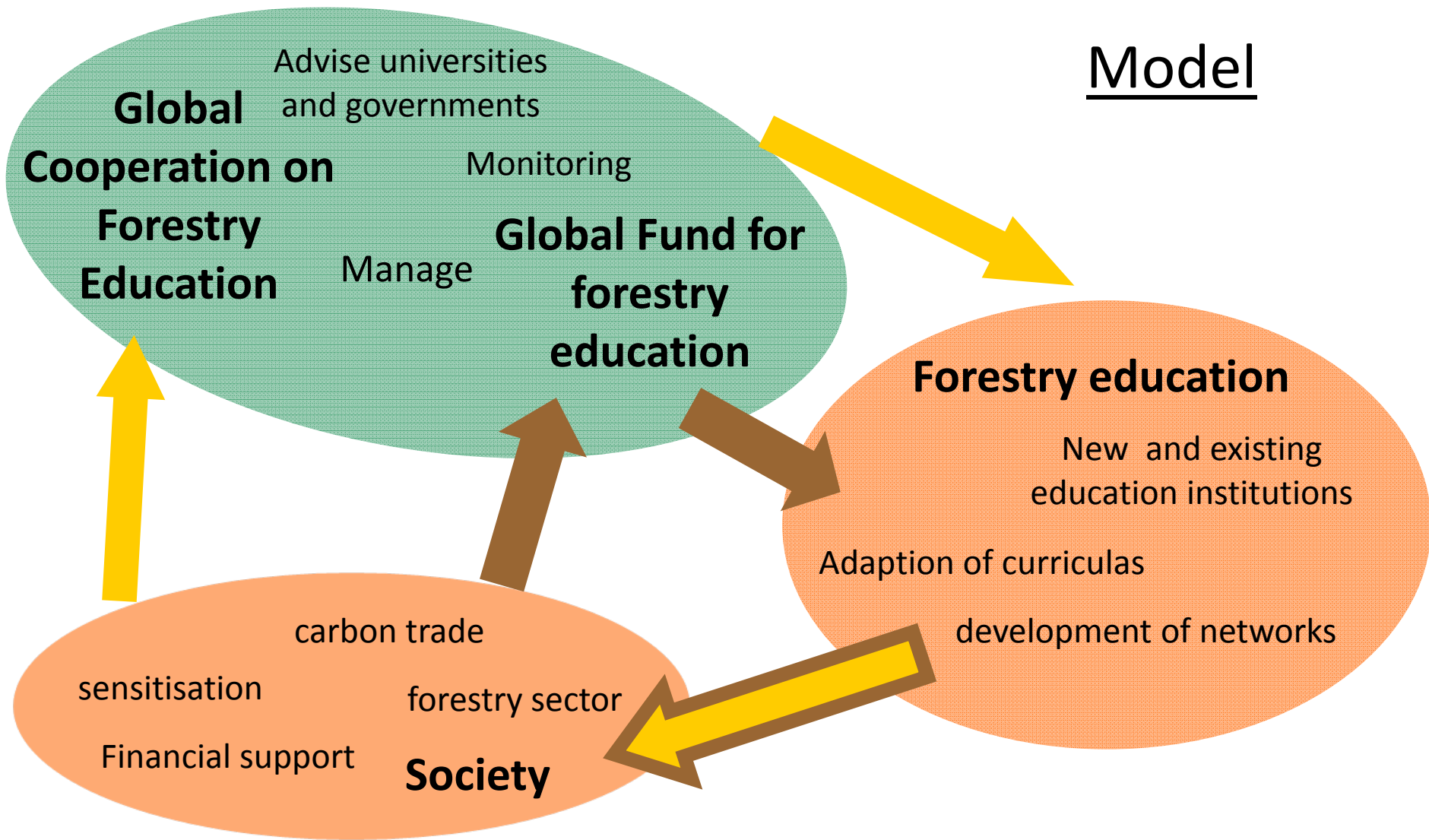
Model





IFSA' s role

- Contribute to the monitoring of evolution of the Forestry Education
- Encourage partnerships between students and professionals
- Carry information to students





Way ahead

WE NEED PROFESSIONAL CONTRIBUTION

- The document is to be commented and improved.
- Request it at forestry.education@ifsa.net
- Send your comments and suggestions to the same address



Discussion

- In the coming weeks and months, **who** should take the lead to carry this initiative?
- **How** to ensure the participation of all concerned parties?
- Are there **any existing structures** to host the proposed global cooperation for forestry education?